



Image Access

BSCAN Capture

- Document Scanning
- Forms Processing
- Image Clean-up
- Barcode, OCR, ICR, OMR
- Rapid Key Entry
- Custom Workflow
- Unlimited Scalability
- Remote Capture
- Portable Scanning
- High Security



Better quality results for less





OVERVIEW

Better Results for Less

BSCAN Capture software is a complete capture workflow system that is now simpler than ever to use. Enjoy access to all of BSCAN's features without hassle. Job set-up just got easier!

BSCAN's set-up Wizard puts custom capture workflow, advanced imaging tools, forms processing and key-entry solutions well within reach of imaging professionals and end-users alike. BSCAN's wealth of features makes it ideal for virtually any scanning need.

A logical choice for the simplest to most sophisticated high-volume document and data capture need, BSCAN runs virtually any production scanner in the market from 10ppm to 400ipm.

In addition to simplifying job set-up with the release of BSCAN 5.0, we've added new forms processing tools, included license-free CD and DVD storage and lookup software, 128-bit to 4096-bit encryption, leading-edge remote scanning tools, along with scanning to the Web. These new features are included with our tried-and-true OCR, ICR, OMR, IMR and Barcode Recognition engines for which BSCAN is known.

BSCAN's open-architecture is compatible with many third-party document image management systems in network, UNIX and mainframe environments. BSCAN runs under MS-Windows on a stand-alone or networked PC and can be configured as a dedicated scan station, a complete archive retrieval system or a multi-purpose workstation.



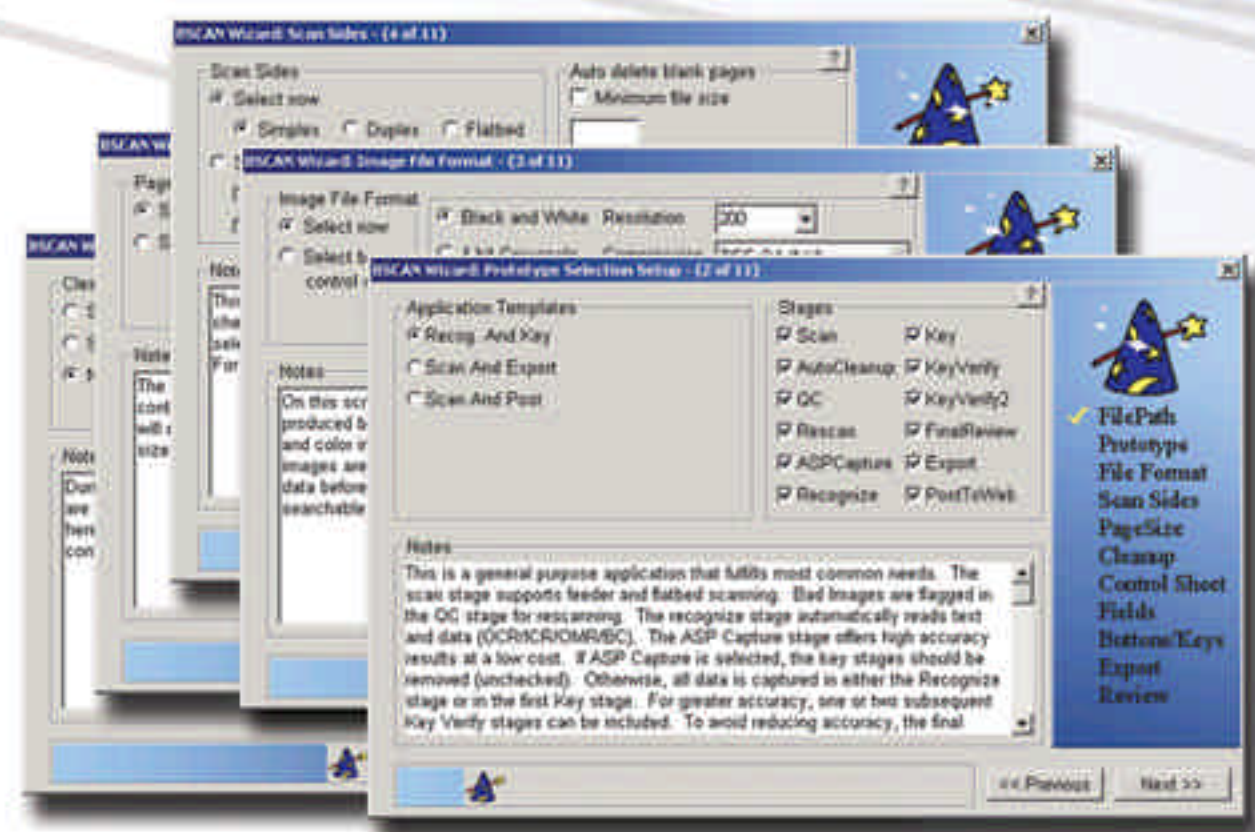
Security

Do you want 128-bit security for your data disk and communication protection? How about 4096-bit or anywhere in between? BSCAN includes the algorithms selected by the international business community and the NSA.

Control Sheets

Use BSCAN Control Sheets to select the scanning application, scanner settings, image processing and document separation as well as automatically index from a database.

It's as easy and intuitive as it sounds. Workers can simply use a pen to check the desired settings and feed the paper into the scanner along with a batch of documents. We provide you a digital master, so you can print Control Sheets whenever you need them. Submit an index file to BSCAN and it will print control sheets and setup data matching with an index barcode printed on each control sheet.



Setup Wizard

Use BSCAN's new WIZARD to quickly and easily setup scan jobs. Control scanner settings, setup image clean-up and indexing, select OCR, ICR, Barcode and Mark recognition zones and workflow using the Wizard's simple dialog boxes.

Even a novice can setup sophisticated capture workflows. Scan jobs can be setup faster, with fewer errors, and without compromising production efficiency, and that means higher profits for you.

DiskViewer

Put DiskViewer on every backup/archive CD and search across many CDs. Search by multiple index fields, make notes and bookmarks. It's an invaluable tool for delivering BSCAN output in convenient self-contained packages.

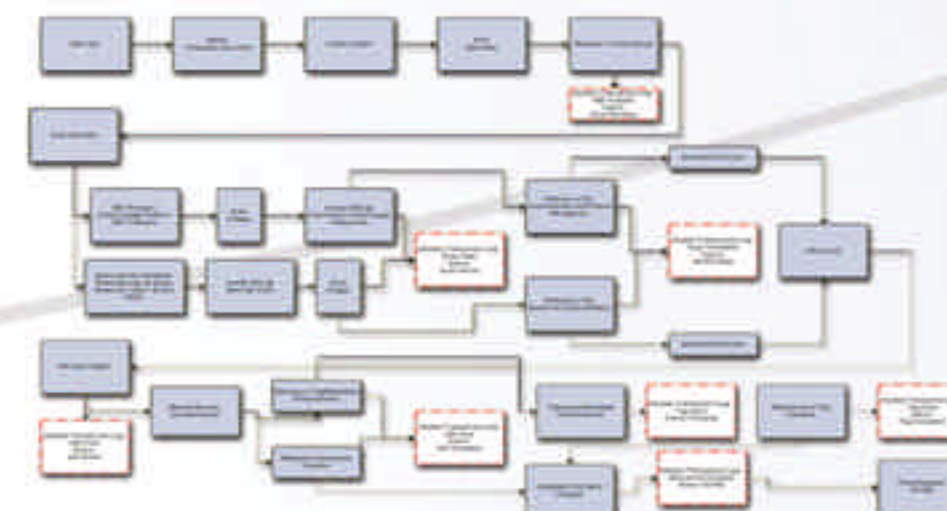
There is **NO LICENSE FEE** for the retrieval software on each CD. So it's a great way to improve your bottom line. Since each disk has search and retrieval capability built in, it's also an excellent means of backing up data. (Requires purchase of DiskWriter.)



SELF-SEARCHABLE CDs
WITHOUT LICENSE FEES

Custom Workflows

From the simplest, to the most complex workflows — local, remote and distributed — BSCAN gives you all the features you need. Its flexible interface allows you to eliminate any functions you don't need, and that means fewer operator errors and a more efficient, elegant design.



Remote Processing

Setup your own remote forms processing facility or connect through www.BSCAN.com to one of the world's largest forms processing systems and optionally pick your accuracy by field. With BSCAN's image packet technology, capture up to 500 characters per minute over a standard 256 kbps DSL line.

Setup takes just a few minutes and gives you unlimited capacity to take on the largest jobs with confidence. Don't struggle with unpredictable results from temporary workers.



Unlimited Scalability

Whether you need a single station or 100 stations, local and/or remote, BSCAN is the right tool for the job. BSCAN uses the power of distributed computing combined with centralized management and reporting. Management and reporting can be WEB-enabled for easier management of remote sites.

All capture workflow stages, including scanning, forms processing, keying, QC, and more, can be done on a single station or broken out into multiple workstations, creating the most simple or sophisticated workflows possible.



CD/DVD Publishing

Automatically record and label multiple CDs and DVDs. It's all done on one machine without manual intervention. No more checking to make sure the data matches the label. Eliminate human error with your very own high-speed, unattended CD and DVD factory.



CASE STUDIES

BSCAN's success in the field



A major credit card company underwent an audit that required them to capture several years of data from microfiche and submit two billion characters of 100% valid data.

The validation checks would indicate that errors existed somewhere within tens of thousands of records without pointing out which record(s) might contain the error.

The only way to succeed was to approach 99.9999% accuracy before applying the rules and then use a custom-built error seeking function to identify more likely candidates for the errors and eventually find the errors. In the end, one worker searched nearly two billion characters with the tool and found 980 of the last 1,000 errors in less than 40 hours for a **final accuracy of 99.99999%**. The total cost -- less than a dollar per thousand characters !



BSCAN is a leader anywhere there are high volumes of paper and images to process. A major autoparts distributor scans over one million pages per month and accurately reads dot-matrix-printed text on each form. Their old system processed less than 200,000 pages per month and required three to six workers performing corrections.

When they switched to BSCAN, they were able to ramp up to one million pages per month and even handle **over 100,000 pages in a single day, with no additional staff.**



Another high volume customer reported 20 OCR errors in over

100,000 characters read (99.976% accuracy) as a 'bug.' No other product would have come close. Apparently, **BSCAN made OCR look so easy** that they expected zero errors!



Customized applications offer greater efficiency, reduced training costs and fewer operator errors. We built a **custom capture system** for a company that uses traveling scan operators with portable scanning systems that scan medical records at various hospitals. The **system works so well that the company has expanded across the U.S.**



In 1999 an international bank-related project was so large that it would normally have taken six months just for setup and deployment and another year to perform.

Nearly one hundred million bank statements had to be accurately read from microfilm in less than four months. The clients searched the world, and all products failed to deliver except BSCAN and one capture product from across the Atlantic.

To complete the project quickly, accurately and under budget, a sophisticated, **31-stage** system was built with hundreds of processing CPUs and hundreds of computers around the world connected through the Internet, running six types of review and corrective stages.

The **BSCAN system processed twice the volumes with half the errors, 1/4 the review and correction staff and fewer engineers** and technicians than required by the other product. Throughputs often exceeded **one million pages per day.**



In the trucking industry a reliable barcode reader is essential. BSCAN processes over half a million bills of lading and delivery receipts per day for trucking in the U.S. alone.



Another company worked with Image Access to design and build a system for capturing medical laboratory test result documents with special checks and validations that ensure that errors are virtually impossible. So far, they've installed over 30 custom BSCAN stations around the country.



Image Access built several systems for identifying an area of voter registration cards and extracting the clip of a signature for deployment on the web or for creation of electronic signature files.



WWW.IMAGEACCESS.COM



FEATURES

Setting Capture Standards

INDEXING

- Perform any or all indexing at scan time or as a post-process
- Easily generate barcode and mark sense Control Sheets from database and ASCII file.
- Unlimited barcode, text, handprint & mark sense (check box) fields per page
- Multiple OCR/ICR engines (color, grayscale and bitonal)
- Searchable PDF output + image support
- Superior recognition engines for text, barcodes and mark sense
- Rapid Character Correction
- High-speed database correlation reduces load on mainframes and SQL servers
- Extensive data validation filters
- Document and image endorsing
- Rapid manual indexing with data entry assist

WORKFLOW

- Workflow templates
- Unlimited scanning, indexing, processing, QC, rescanning, validating, automatic recognition, manual correction, manual entry, exporting, and custom stages
- Scalable from one to unlimited scan stations
- Distributable across LANs, WANs, and the Internet
- Portable - distribute mass media (e.g. CD or DVD) to data entry operators and receive index information via the internet
- Customizable - virtually any workflow requirements can be met
- Macro facility with conditional logic

CONNECTIVITY

- ODBC/ASCII • Email
- SQL • Printing
- ASP • FTP
- Scan2Net • MAPI
- Secure internet (HTTPS)
- TWAIN, SCSI, ISIS Video
- 50 file formats, including TIFF, JPEG, GIF, PDF, MODCA, IOCA
- VSM, UNIX (mounted volumes)

IMAGE PROCESSING

- Extensive image processing: clip, rotate, deskew, invert, mirror, despeck, crop, redact, remove lines and much more
- Dynamic Resampling Software™ *rebinarize without rescanning*
- Conditional processing
- Document and image endorsing
- Automatic and manual tag and process

SCANNERS

- Color, grayscale, bitonal
- Duplex, simplex, planetary, flatbed
- 5-210 page per minute scanners:
- Agfa • Kodak
- BancTec • Panasonic
- Bell & Howell • Ratio
- Canon • Ricoh
- Fujitsu • Visionshape
- Hewlett-Packard • Walther
- Image Access • Xerox
- Inotec • And many more...

SPECIAL FEATURES

- Fast encryption
- Continuous forms scanning & processing (e.g. well logs, EKG's)
- CD/DVD Mastering Tools
- Bates Numbering for paper, image, file & indexing
- Unlimited image file directory schemes
- Rapid image processing with mouse-controlled scripts

PLATFORMS

- Windows 2000
- Windows XP
- Windows NT, 95, 98, 3.1

OTHER PRODUCTS

- BSCAN Lite
- BSCAN FP
- BSCAN DE
- Bookeye C and D size planetary scanners
- FBA2-100 highspeed color flatbed scanner (16.5 x 23.3")



UNITED STATES

Image Access, Inc.
543 NW 77th Street, #210
Boca Raton, FL 33487
Tel 561.995.8334
Fax 561.995.8036
Email info@imageaccess.com

EUROPE

Image Access Computer GmbH
Hatzfelder Str. 161-163
D-42281 Wuppertal
Germany
Tel 49-202-27058-0
Fax 49-202-27058-40
Email info@imageaccess.de

SOUTH AMERICA

R. Cristiano Viana, 413
Sao Paulo, SP
Brasil
Tel 5511-3061-2520
Fax 5511-3064-8896
Email jbezno@imageaccess.com.br

WWW.IMAGEACCESS.COM